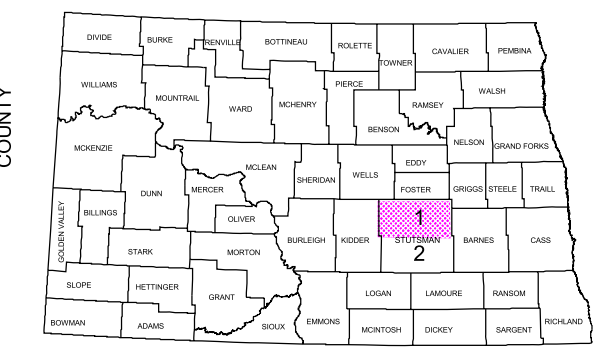
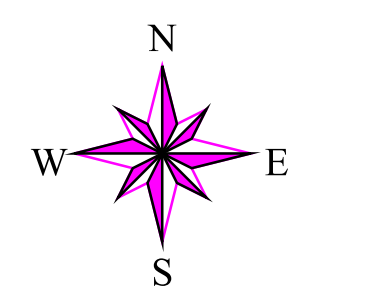
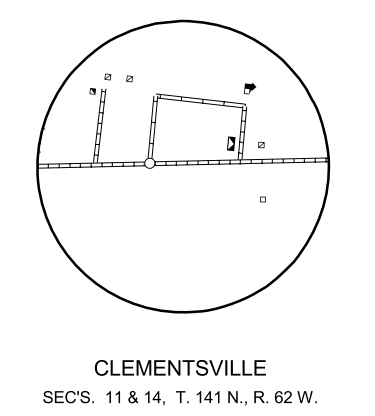
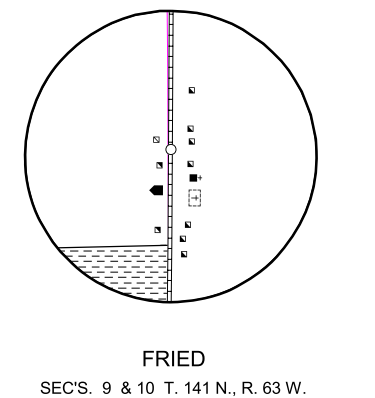
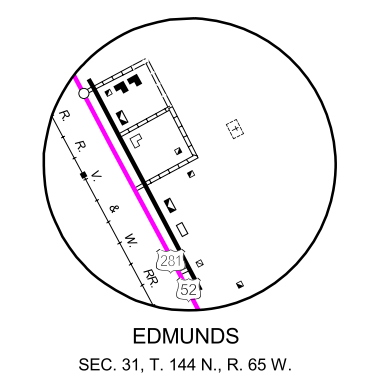
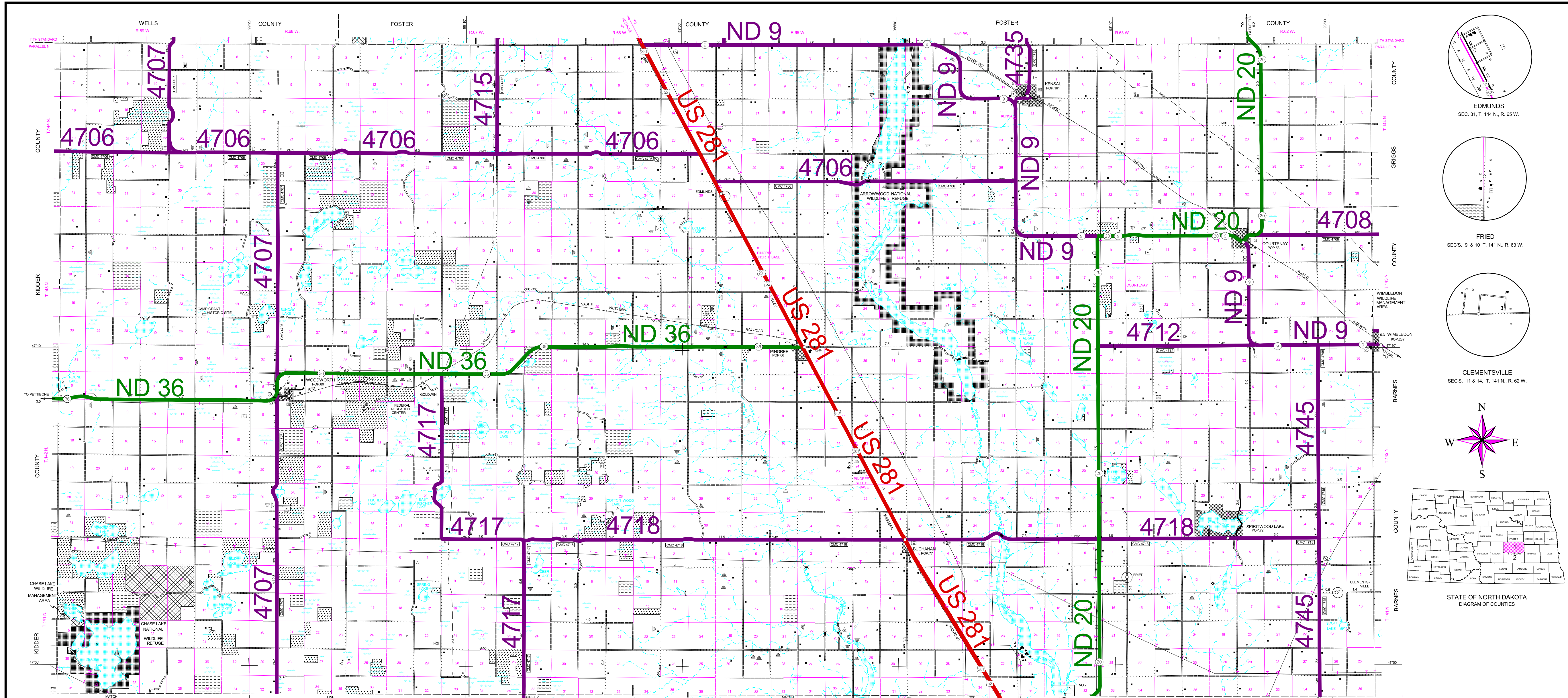


2007 FUNCTIONAL CLASSIFICATION



- ROADS AND ROADWAY FEATURES**
- PRIMITIVE ROAD
 - UNIMPROVED ROAD
 - GRAVEL GRADED ROAD
 - GRAVEL GRADED AND DRAINED ROAD
 - PAVED ROAD
 - 4 LANE UNDIVIDED HIGHWAY
 - HIGHWAY WITH FULL CONTROL OF ACCESS
 - STREETS IN UNINCORPORATED TOWNS
 - CLOVER LEAF OR INTERCHANGE
 - INDIAN SERVICE ROAD
 - COUNTY MAJOR COLLECTOR ROUTE NUMBER
 - POINTS BETWEEN WHICH DISTANCES ARE MEASURED
 - INTERSTATE NUMBERED HIGHWAY
 - U.S. NUMBERED HIGHWAY
 - STATE HIGHWAY SYSTEM

- DRAINAGE**
- INTERMITTENT STREAM (NARROW)
 - NARROW STREAM
 - WIDE STREAM
 - WIDE STREAM WITH DAM
 - LAKE, RESERVOIR, OR POND WITH DAM
 - LAKE, RESERVOIR, OR POND
 - MARSH OR SWAMP LAND
 - DRAINAGE DITCH
 - CANAL
 - NAVIGATION
 - DOCK, PIER, OR LANDING
 - STRUCTURES
 - HIGHWAY BRIDGE, GENERAL
 - MINOR DRAINAGE STRUCTURE

- PUBLIC SERVICE FACILITIES**
- POST OFFICE
 - HIGHWAY GARAGE
 - GARBAGE OR RUBBISH DUMP
 - SEWAGE DISPOSAL PLANT
 - AUTOMOBILE GRAVEYARD
 - SCRAP BUILDING MATERIAL
 - WATER SUPPLY STAND PIPE OR TANK
 - PIPE LINE, GAS
 - PIPE LINE, OIL
 - TRANSMISSION LINE
 - POWER SUBSTATION
 - BOOSTER STATION
 - BROADCASTING STATION (RADIO OR TV)
 - COMMUNICATION TOWER
 - MUNICIPAL BUILDING
 - AIRPORTS
 - AIRFIELD LIMITED FACILITIES
 - LANDING AREA OR STRIP
 - AIRWAY LIGHT BEACON, GENERAL

- FARM UNITS, DWELLINGS, ETC.**
- FARM UNIT
 - DWELLING OTHER THAN FARM
 - ROWS OR GROUPS OF DWELLINGS
 - CLOSELY SPACED (FIGURE DENOTES NUMBER OF DWELLINGS)
 - CAMP SITE, NO PERMANENCE (TENTS OR TRAILER PARKING)
 - BARRACKS, OR DORMATORIES FOR STUDENTS, WORKERS, MIGRANTS, ETC.
 - SEASONAL OR SUMMER COLONY DWELLING
 - CAMP OR LODGE (PERMANENT SITE WITH BUILDINGS)
 - REST AREA
 - SMALL PARK (SP-STATE, CP-COUNTY, MP-MUNICIPAL, WP-WAYSIDE PARK)
 - GOLF COURSE OR COUNTRY CLUB
 - AMUSEMENT PARK OR HALL
 - OBSERVATION OR LOOKOUT TOWER
 - FAIR GROUND, RACE COURSE, SPEEDWAY
 - FISH HATCHERY
 - GAME FARM
 - RIFLE CLUB
 - RIDING ACADEMY
 - DRIVE-IN THEATER
 - BIRD SANCTUARY

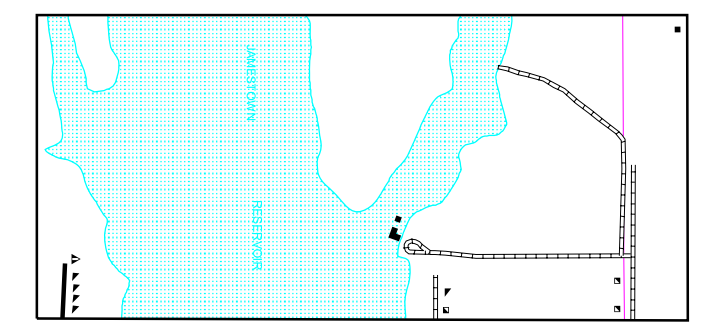
- CONSERVATION AND RECREATION**
- PICNIC GROUND
 - PLAYGROUND, BALL FIELD, ETC.
 - BATHING BEACH OR SWIMMING POOL
 - CAMP SITE, NO PERMANENCE (TENTS OR TRAILER PARKING)
 - TOURIST COURT, OR MOTEL
 - CAMP OR LODGE (PERMANENT SITE WITH BUILDINGS)
 - REST AREA
 - SMALL PARK (SP-STATE, CP-COUNTY, MP-MUNICIPAL, WP-WAYSIDE PARK)
 - GOLF COURSE OR COUNTRY CLUB
 - AMUSEMENT PARK OR HALL
 - OBSERVATION OR LOOKOUT TOWER
 - FAIR GROUND, RACE COURSE, SPEEDWAY
 - FISH HATCHERY
 - GAME FARM
 - RIFLE CLUB
 - RIDING ACADEMY
 - DRIVE-IN THEATER
 - BIRD SANCTUARY

- BOUNDARIES**
- COUNTY LINE
 - TOWNSHIP LINE
 - CORPORATE LINE
 - SECTION LINE
 - MATCH LINE BETWEEN ADJOINING SHEETS OF SAME COUNTY
 - BOUNDARY TO MARK ENLARGEMENT INSET
 - NATIONAL PARKS, REFUGES, AND OTHER RESERVATIONS
 - MONUMENT - SMALL, HISTORIC SITE
 - FEDERAL RESERVATION INSET
 - WATERFOWL PRODUCTION AREA
 - STATE PARKS
 - STATE SCHOOL LAND
 - RESERVOIR BOUNDARY (TAKING LINE)

- INDUSTRIAL**
- STORE OR SMALL BUSINESS ESTABLISHMENT
 - FACTORY OR INDUSTRIAL PLANT
 - OIL TANK
 - GROUP OF STORAGE TANKS (OIL OR GAS)
 - PUMPING STATION (OIL OR GAS)
 - WAREHOUSE - GENERAL
 - GRAN ELEVATOR
 - STOCK YARD - LOADING PEN OR CORRAL
 - GRAVEL PIT
 - EDUCATIONAL AND CORRECTIONAL INSTITUTIONS
 - SCHOOLHOUSE
 - OTHER EDUCATIONAL INSTITUTIONS
 - TOWNHALL, GRANGE, OR COMMUNITY HALL
 - MUSEUM - GENERAL

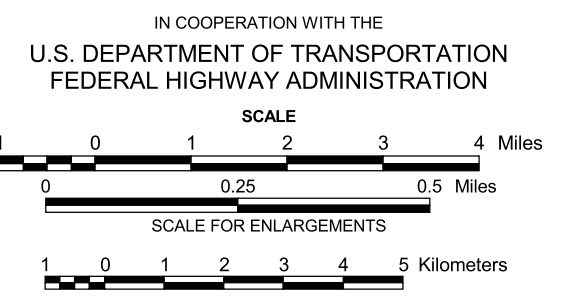
- CITY AND VILLAGE CENTERS**
- COUNTY SEAT
 - OTHER CITIES AND VILLAGES
 - INCORPORATED CITY OR VILLAGE (GENERALIZED)
 - RAILROADS
 - RAILROAD (ANY NUMBER OF TRACKS USED BY A SINGLE OPERATING CO.)
 - RAILROAD STATION
 - RAILROAD GRADE CROSSING
 - MISCELLANEOUS
 - TRIANGULATION STATION
 - DOT TO INDICATE LOCATION OF ANY CULTURAL FEATURE SHOWN OUT OF POSITION
 - ALL VACANT CULTURE INDICATED BY OPEN SYMBOLS
 - LATITUDE AND LONGITUDE

- LEGEND**
- PRINCIPAL ARTERIALS
 - MINOR ARTERIALS
 - MAJOR COLLECTORS



GENERAL HIGHWAY MAP STUTSMAN COUNTY NORTH DAKOTA

PREPARED BY THE
NORTH DAKOTA DEPARTMENT OF TRANSPORTATION
PLANNING AND PROGRAMMING DIVISION



2004