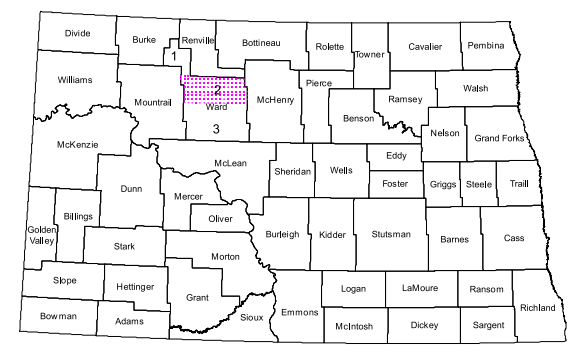
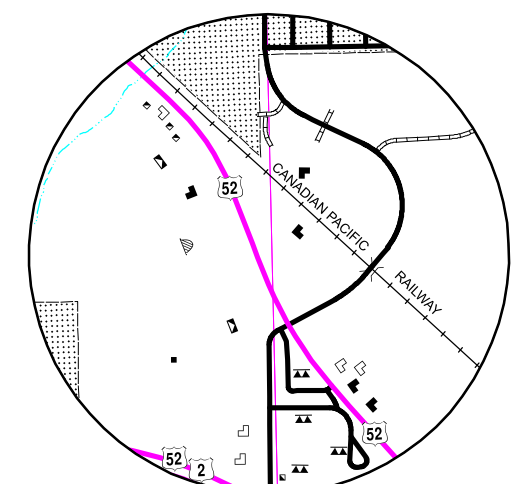
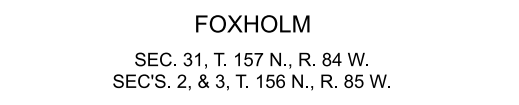
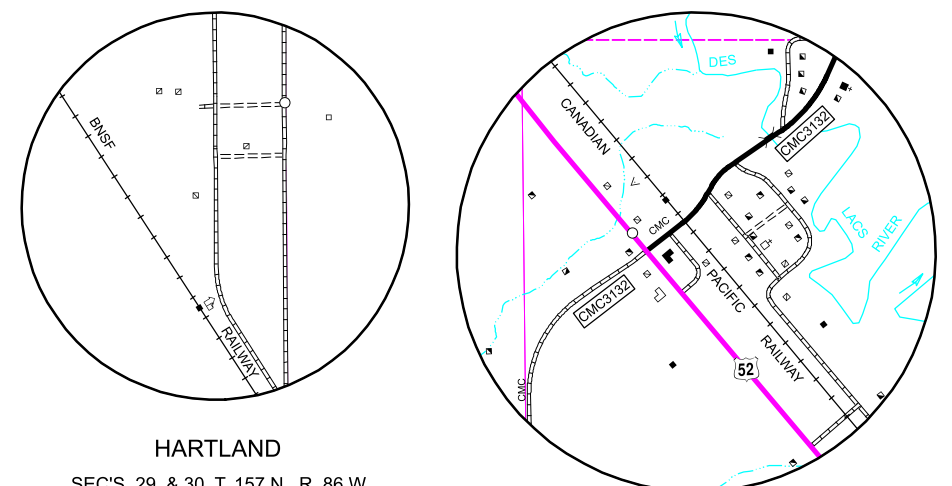
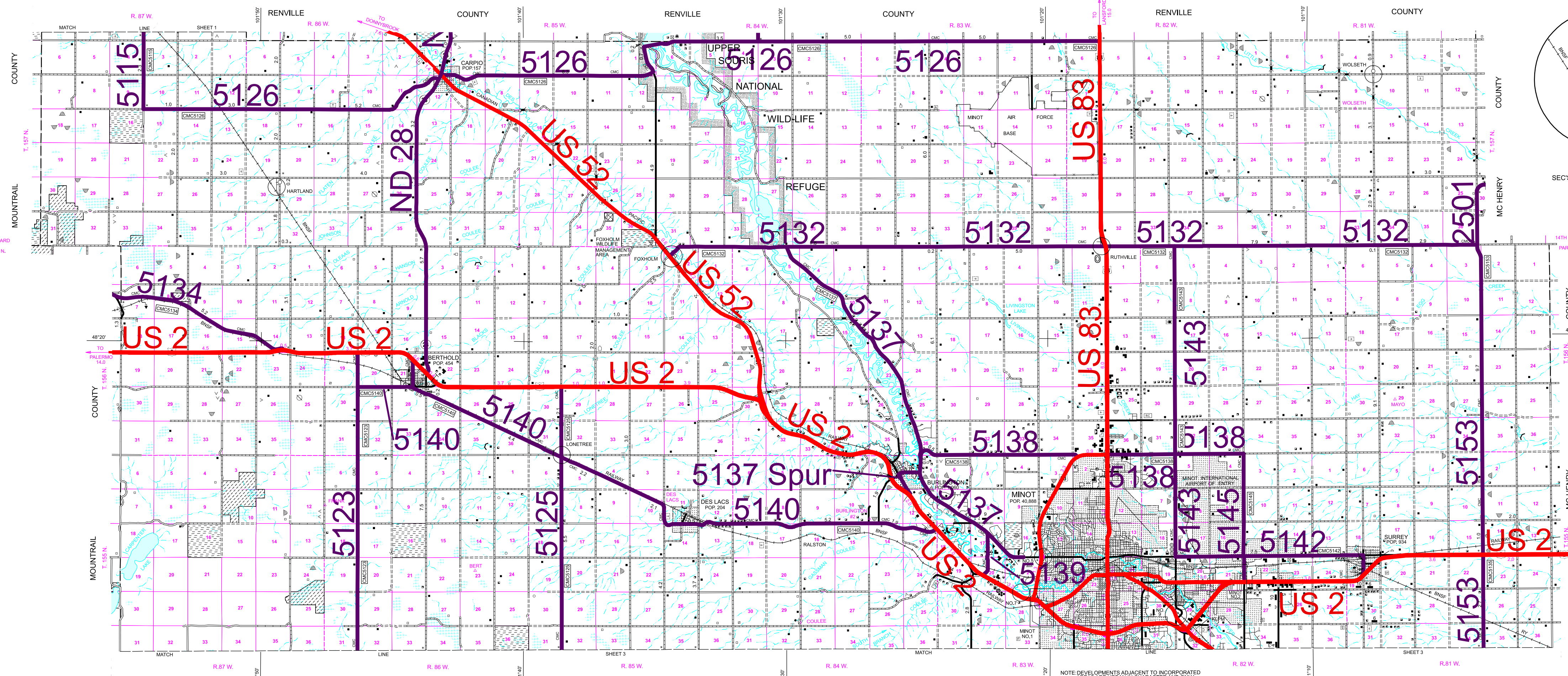


2007 FUNCTIONAL CLASSIFICATION

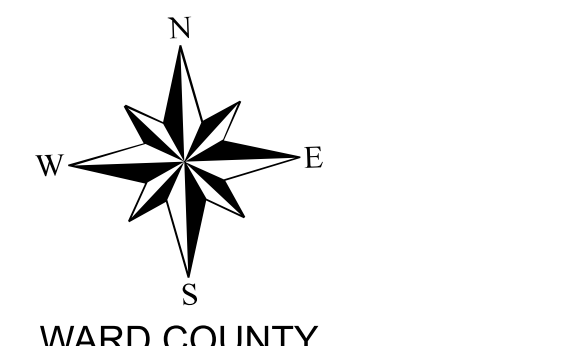


LEGEND

- INTERSTATE
- PRINCIPAL ARTERIAL
- MINOR ARTERIAL
- MAJOR COLLECTOR

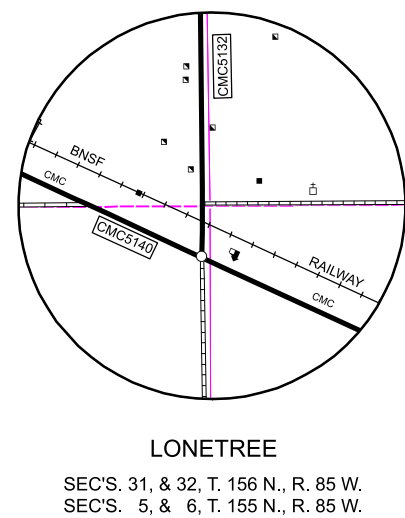
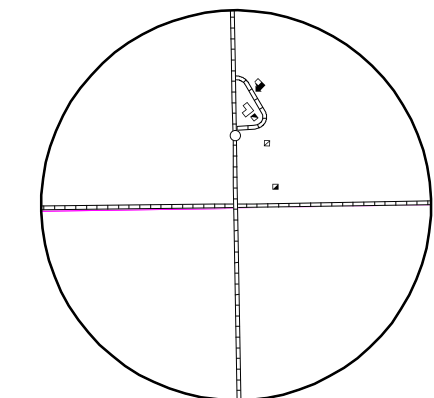
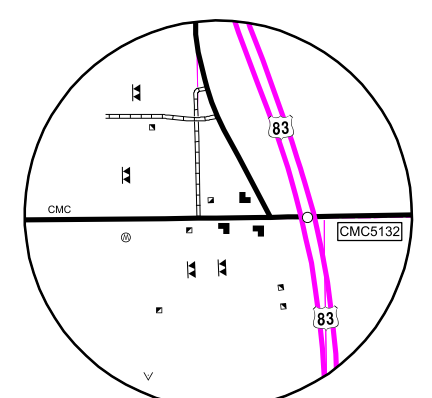
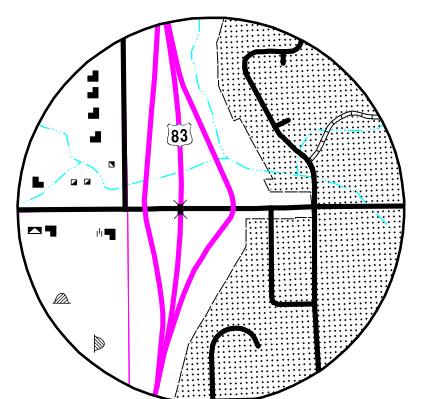
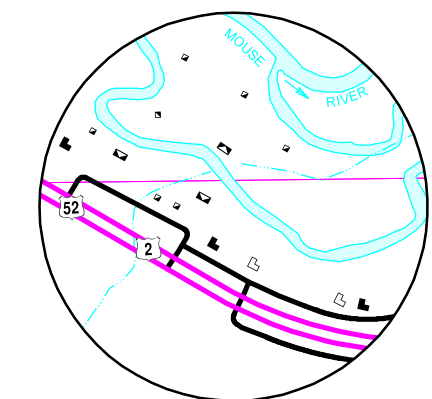
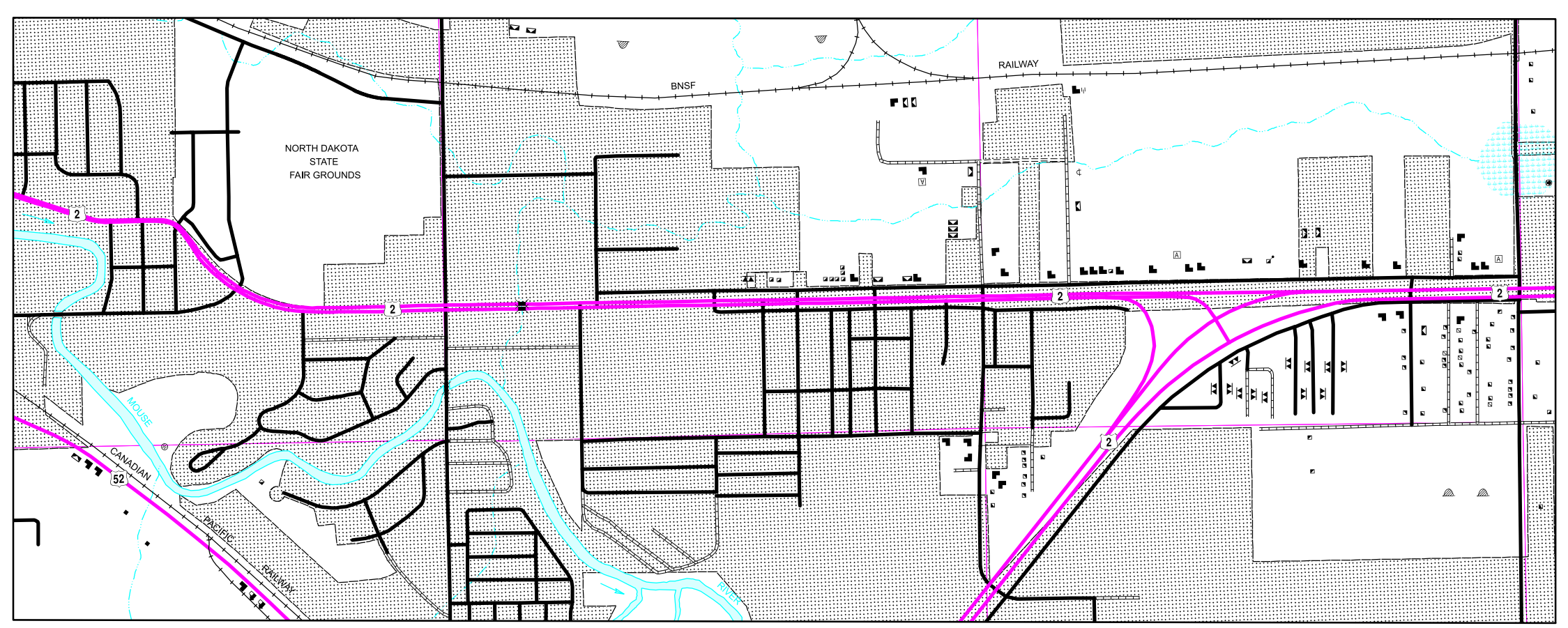
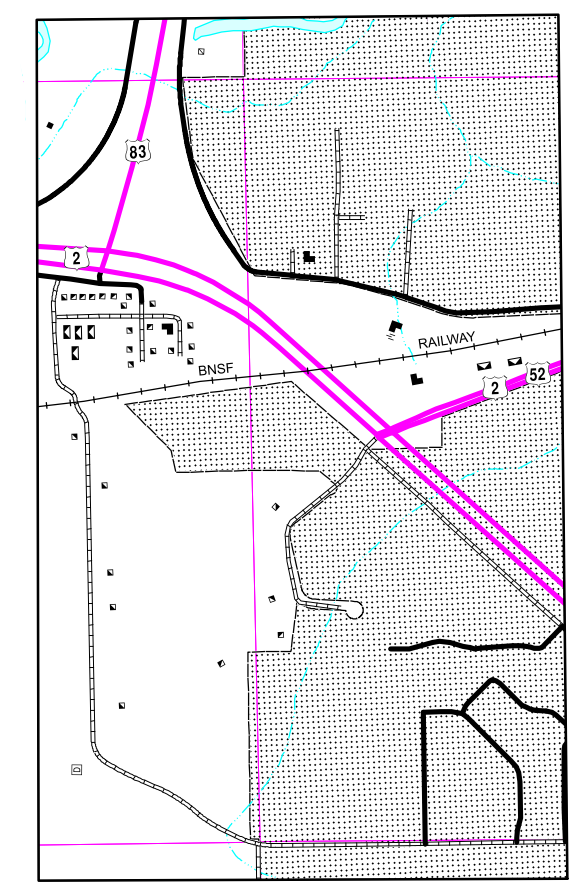
REVISION DATE AND CHANGE

12-03-2008	ADDED 1 MILE CMC5145
07-13-2009	ADDITION TO CMC5138 & CMC5145
03-24-2015	REASSIGNMENT OF CMC 5138 TO CMC5142
12-05-1995	Moved 13 miles from CMC3838 to CMC5126 per agreement
03-24-2015	Added 18 miles to CMC5125



2009

BASED ON AERIAL PHOTOGRAPHY OF 1953
GROUND INVENTORY OF 2009
AERIAL INVENTORY OF 2009
UNIVERSAL TRANSVERSE MERCATOR ZONE 14
NORTH AMERICAN DATUM 83



Notice of Disclaimer
The North Dakota Department of Transportation (NDDOT) makes this map available on an "as is" basis as a public service. Under no circumstances does NDDOT warrant or certify the information to be free of errors or deficiencies of any kind. NDDOT specifically disclaims all warranties, express or implied, including but not limited to the warranties of merchantability and fitness for a particular purpose.

COPIES OF THIS MAP ARE AVAILABLE FOR PUBLIC USE AT A NOMINAL COST FROM:
MAP SALES, ND DEPARTMENT OF TRANSPORTATION, 608 E. BLVD. AVE., BISMARCK, N.D. 58505-0700